

PHOTOS OF FEATURES ON / AROUND PREFERRED SITE



Figure 1: Ground cover of the preferred site in the area where the solar plant is proposed. Windmill on the ridge in distance



Figure 2: Drainage line (visible on various positions on the both preferred and alternative sites)



Figure 3: Windmill on ridgeline. Photo taken from preferred site in a north-easterly direction.



Figure 4: Dry animal drinking hole (no 1) on the preferred site



Figure 5: Dry animal drinking hole (no 2) to the west of the preferred site



Figure 6: Animal tracks (aardvark) at waterhole hole (1) close to the preferred site, which was dry at the time of the site visit (22 February 2012)



Figure 7: Animal track (likely cattle) on the preferred site



Figure 8: Gate of access track to preferred site (photo taken from R359 tarred road). The proposed site lies to the left of the track in the visible distance.



Figure 9: Blouputs substation to the southwest of the site (approximately 4km)



Figure 10: Power line on the western border of the farm running south towards the Blouputs substation

PHOTOS OF FEATURES ON / AROUND ALTERNATIVE SITE



Figure 11: Drainage line close to alternative site (looking northwest towards the site)



Figure 12: General ground cover on alternative site. Photo taken from access gate looking west along fence line next to R359



Figure 13: Windmill to the east of alternative site (looking east)



Figure 14: Vineyard covered with shade cloth in the distance to the northeast of alternative site

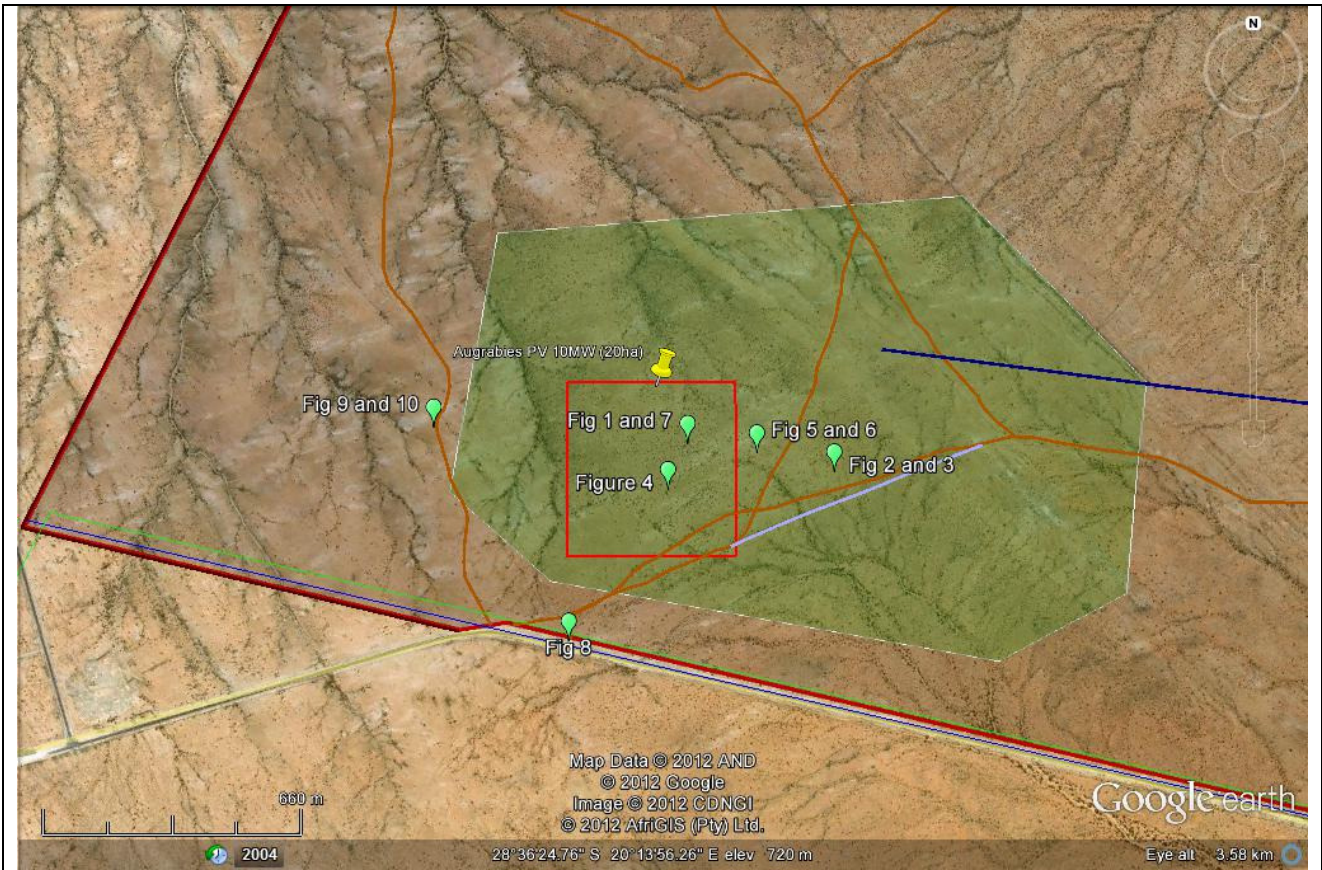


Figure 15: Locations from which photos taken Fig.1-10 for Augrabies solar plant in this appendix

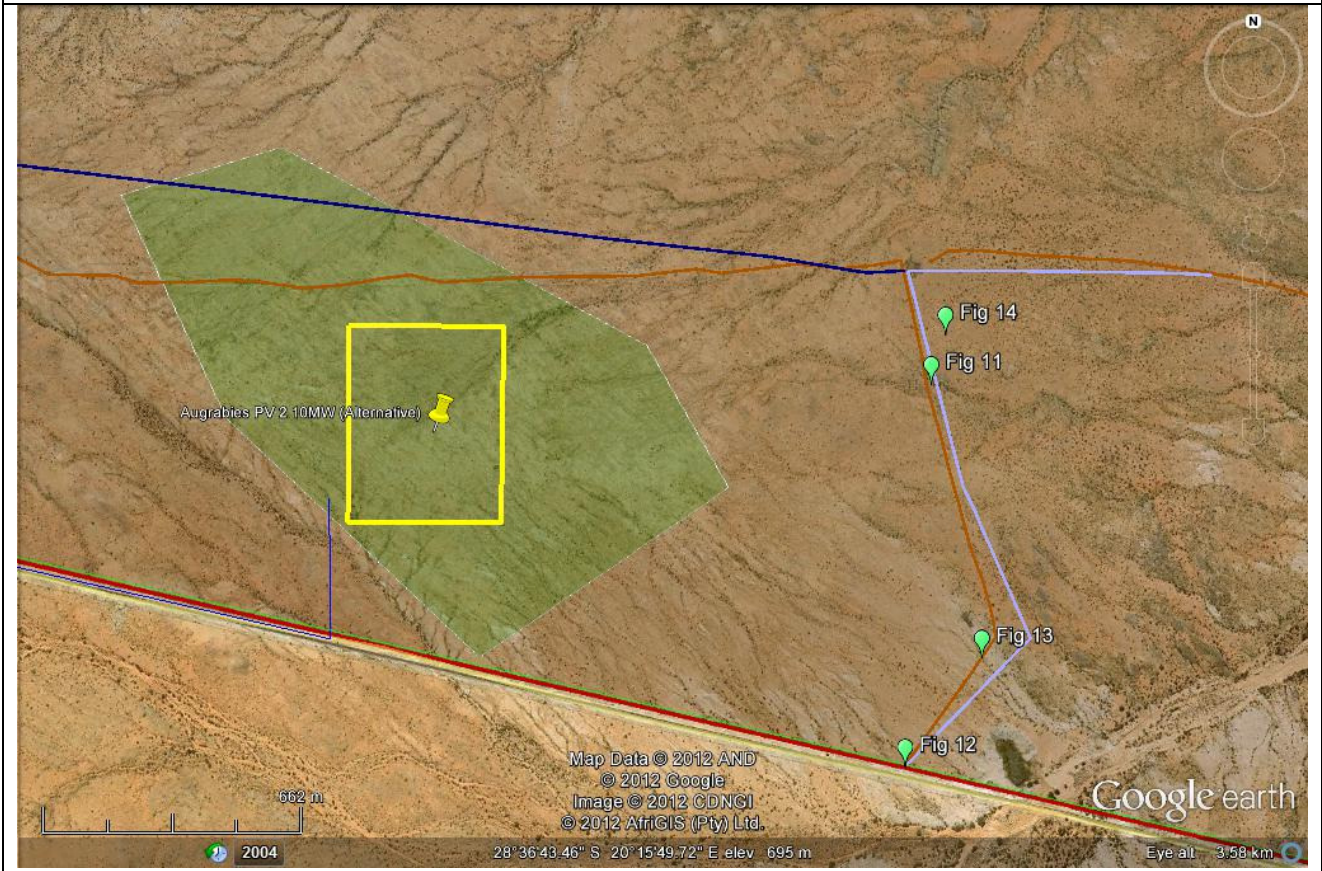


Figure 16: Locations from which photos taken Fig.11-14 for Augrabies solar plant in this appendix