

Figure 1: View towards preferred site looking south. This panorama shot (180°) was taken from east to west from next to Augrabies Falls National Park fence line on northern border of the farm Rooipad. The visible horizon is a small ridgeline behind which the proposed solar plant would be located.



Figure 2: View towards preferred site looking east. This panorama shot (180°) was taken from north to south from the current access track (visible to the left), the visible horizon is the same ridgeline as in Figure 1.



Figure 3: View towards preferred site looking west. This panorama shot (180°) was taken from south to north from the current access track (visible to the left)

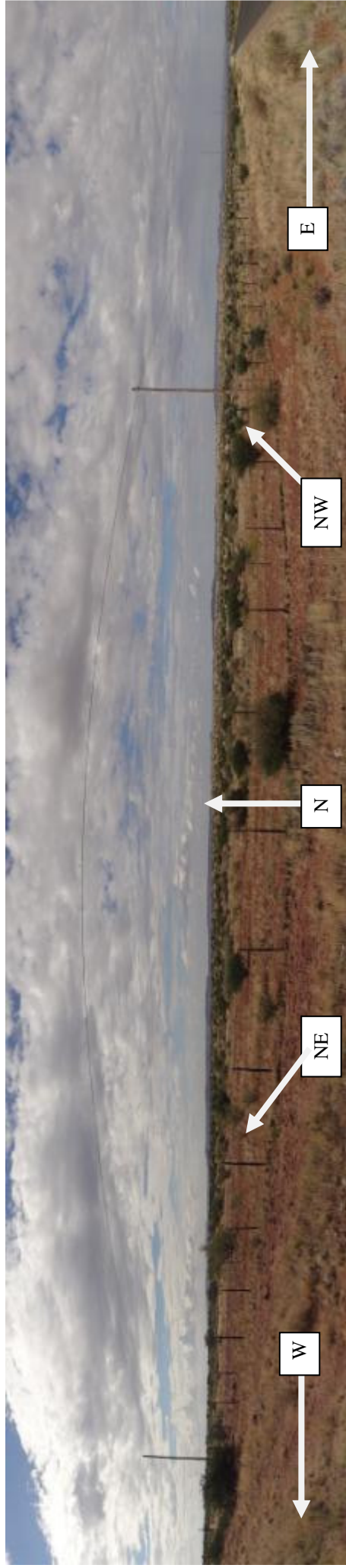


Figure 4: View towards the preferred site looking north. This panorama shot (180°) was taken from west to east, from the R359. The farm fence is visible in the foreground, while the mountain range in the back falls inside the Augrabies Falls National Park.

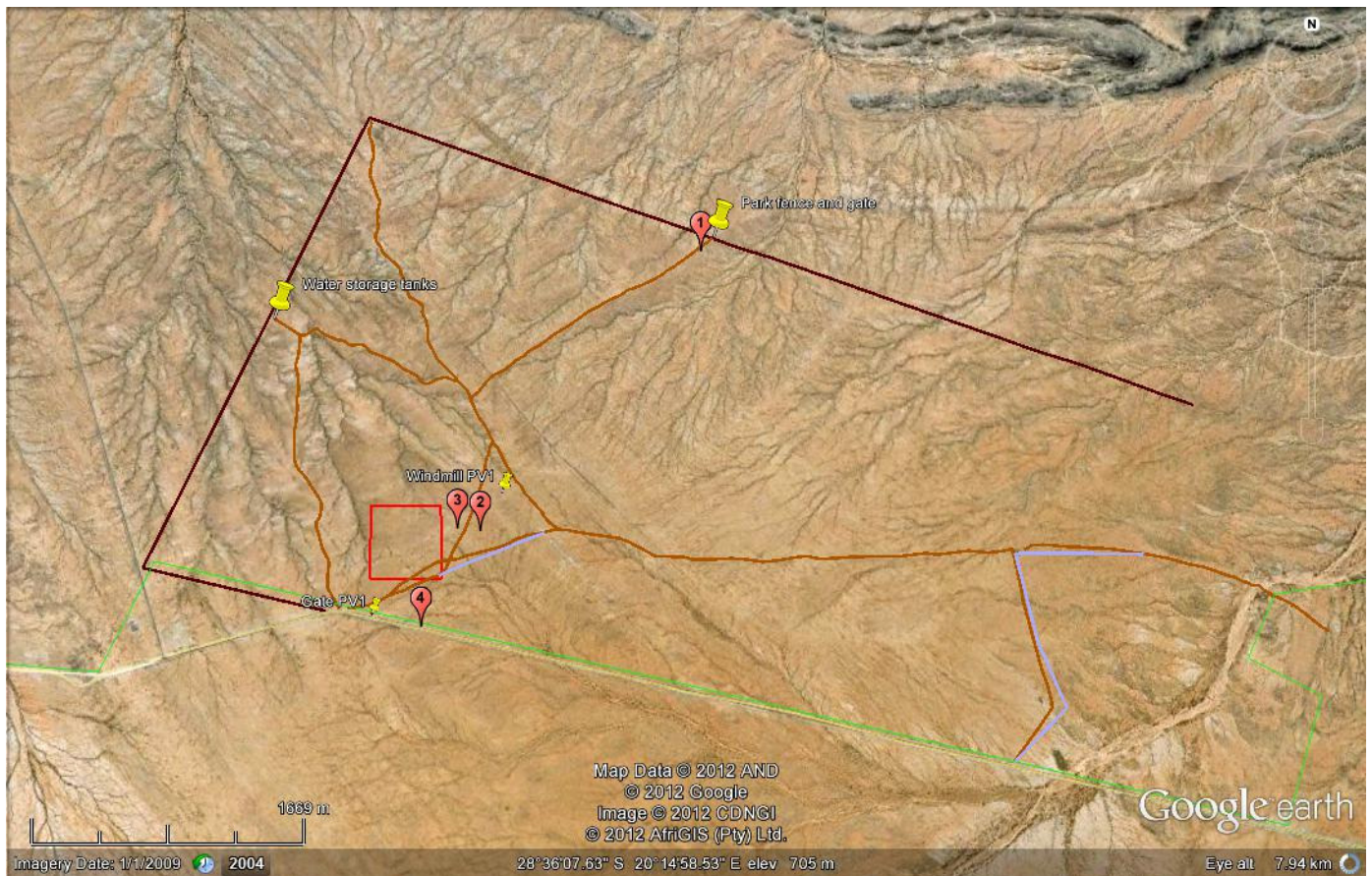


Figure 5: Locations from which photos taken - Fig 1-4 for Augrabies solar plant in this appendix

- FIGURE 1: VIEW TOWARDS PREFERRED SITE LOOKING SOUTH. THIS PANORAMA SHOT (180°) WAS TAKEN FROM EAST TO WEST FROM NEXT TO AUGRABIES FALLS NATIONAL PARK FENCE LINE ON NORTHERN BORDER OF THE FARM ROOIPAD. THE VISIBLE HORIZON IS A SMALL RIDGELINE BEHIND WHICH THE PROPOSED SOLAR PLANT WOULD BE LOCATED. 1
- FIGURE 2: VIEW TOWARDS PREFERRED SITE LOOKING EAST. THIS PANORAMA SHOT (180°) WAS TAKEN FROM NORTH TO SOUTH FROM THE CURRENT ACCESS TRACK (VISIBLE TO THE LEFT), THE VISIBLE HORIZON IS THE SAME RIDGELINE AS IN FIGURE 1. 1
- FIGURE 3: VIEW TOWARDS PREFERRED SITE LOOKING WEST. THIS PANORAMA SHOT (180°) WAS TAKEN FROM SOUTH TO NORTH FROM THE CURRENT ACCESS TRACK (VISIBLE TO THE LEFT) 2
- FIGURE 4: VIEW TOWARDS THE PREFERRED SITE LOOKING NORTH. THIS PANORAMA SHOT (180°) WAS TAKEN FROM WEST TO EAST, FROM THE R359. THE FARM FENCE IS VISIBLE IN THE FOREGROUND, WHILE THE MOUNTAIN RANGE IN THE BACK FALLS INSIDE THE AUGRABIES FALLS NATIONAL PARK. 2
- FIGURE 5: LOCATIONS FROM WHICH PHOTOS TAKEN - FIG 1-4 FOR AUGRABIES SOLAR PLANT IN THIS APPENDIX 3